

Spotlight on ...

Endangered Species

For Grades 2 & up



Special exhibits, artifacts and presentations on six select days in **November 2009**

S	M	T	W	Th	F	S
1	2	3	4	5	6	7
8	9	10	11	12	13	14
15	16	17	18	19	20	21
22	23	24	25	26	27	28
29	30					



This special focus days feature a series of self-directed and educator-led learning stations set up throughout the Aquarium between 10 a.m. and 1 p.m.

Your students will come nose-to-nose with live animals while learning about the threats to marine species and even entire ecosystems – and also the small day-to-day remedies that can help conserve them.

Note: There is an additional \$2.50 fee per person for entrance into the Aquarium during these days.

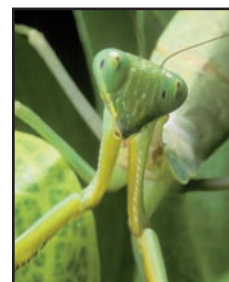


Featured animals include sharks, sea turtles, otters, frogs, seals and a variety of fishes and invertebrates. A live wolf and various birds of prey will make special appearances on select days.



TWO GREAT TIE-INS:

A visit to the "Frogs" exhibit (see p. 17 [or click here](#)). And special screenings of the IMAX movie "Tropical Rainforest" (p. 22 [or click here](#)) at 10 & 11 a.m. & noon on Endangered Species days.



Page Links

[Table of Contents](#)
Page 1

[Standards](#)
Pages 3-4

[Plan Your Visit](#)
Page 5

[Exhibits](#)
Page 11

[IMAX Films](#)
Page 19

[Cruises/Field](#)
Page 34

[Traveling](#)
Page 37

Spotlight on ... Small Fry

For Pre-K - Grade 2



The Aquarium is welcoming young students with special developmentally appropriate activities, demonstrations and instruction

Note: There is an additional \$2.50 fee per person for entrance into the Aquarium during these days.

throughout the Aquarium between 10 a.m. and 1 p.m.

These special days are aimed at providing opportunities to help young students bond with nature in a setting that is focused, contained and controlled.

Group admission these days will be limited and restricted to PreK-Grade 2 students, to ensure an optimal experience.



Special exhibits and activities on six select days in **March 2010**

S	M	T	W	Th	F	S
	1	2	3	4	5	6
7	8	9	10	11	12	13
14	15	16	17	18	19	20
21	22	23	24	25	26	27
28	29	30				



Complete your Spotlight on Small Fry visit with a screening of the IMAX movie "Beavers" at 10 & 11 a.m. & noon (see p. 22 [or click here](#)).



Page Links

[Table of Contents](#)
Page 1

[Standards](#)
Pages 3-4

[Plan Your Visit](#)
Page 5

[Exhibits](#)
Page 11

[IMAX Films](#)
Page 19

[Cruises/Field](#)
Page 34

[Traveling](#)
Page 37

Spotlight on ... Whales

& Other Aquatic Mammals



For Grades 2 & up

Spotlight on Whales & Other Aquatic Mammals is the perfect way to help your students understand that human actions can have an impact on animals' survival!

Note: There is an additional \$2.50 admission fee per person into the Aquarium on these days.

At self-directed and educator-led learning stations set up throughout the Aquarium between 10 a.m. and 1

p.m., your students will participate in hands-on experiences as they learn about the adaptations and behaviors that help whales, seals, otters and beavers survive, as well as the threats to whale populations.

These special activities have been developed to support state science standards for Connecticut and New York. They will help your students understand the importance of interdependencies in ecosystems and show how changes in an environment cause some organisms to survive and others to die or relocate.

Special exhibits, artifacts and activity stations on these select Wednesdays and Thursdays ...

Dec. 2 & 3, 2009,

and

Jan. 13 & 14

Feb. 3 & 4

March 3 & 4

April 7 & 8, 2010

A "Spotlight on Whales" Primer!



A 45-minute auditorium program for up to 200 students

Prepare your students for their "Spotlight on Whales & Other Aquatic Mammals" visit with this multimedia presentation in your school. Students will learn about the diversity of cetaceans (whales and dolphins) and their place in the world of mammals. Topics include feeding behaviors and adaptations. Includes a discussion about conservation. Cost: \$300.



Complete your "Spotlight on Whales & Other Aquatic Mammals" visit with a screening of the IMAX movies "Whales" at 10 a.m. & noon, or "Beavers" at 11 a.m. (see p. 22 [or click here](#))



Page Links

[Table of Contents](#)
Page 1

[Standards](#)
Pages 3-4

[Plan Your Visit](#)
Page 5

[Exhibits](#)
Page 11

[IMAX Films](#)
Page 19

[Cruises/Field](#)
Page 34

[Traveling](#)
Page 37