



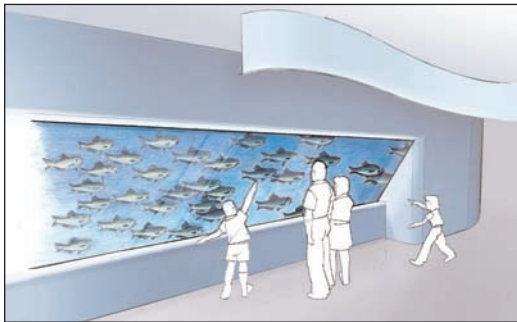
### MARITIME AQUARIUM MASTER PLAN PICTURES

Use the following photos to illustrate your story on The Maritime Aquarium's new master plan. All are 300dpi JPEGs. Download them from our ftp server at <ftp://commguys.com> (username and password are both "press"), or have them sent to you on CD or by e-mail. Contact Marcia Bittner at 203-852-0700, ext. 2241 or [mbittner@maritimeaquarium.org](mailto:mbittner@maritimeaquarium.org) for more information.



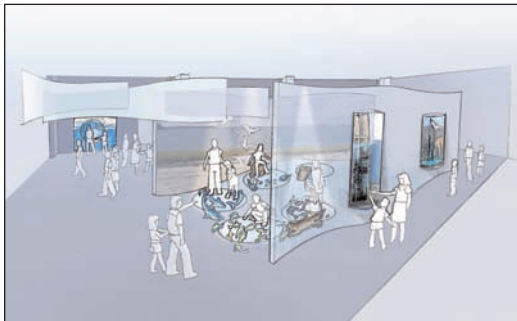
#### **TMAEntrance.jpg**

The Maritime Aquarium's new entrance along the SoNo streetscape will deliver a clear message that this is a thrilling and inviting aquarium to visit.



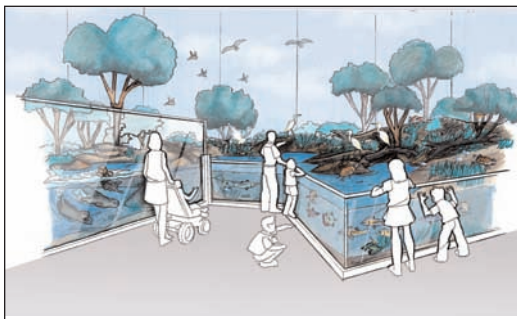
#### **shad.jpg**

American shad, the State Fish of Connecticut, embodies the ocean, the Sound, and the Connecticut watershed.



#### **orientation.jpg**

An exciting virtual reality experience immerses people in the diverse community of organisms that create the dynamic ecosystem of the Sound.



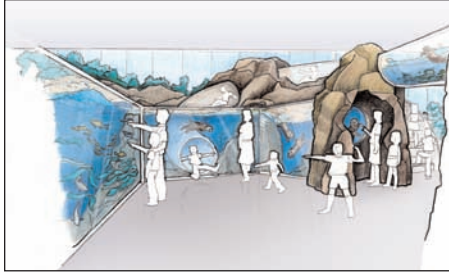
#### **ShoresOfTheSound.jpg**

Shore birds wade in the sunlit salt marsh.

**ALSO AVAILABLE...  
MAPS OF ALL THREE  
LEVELS**

## Maritime Aquarium Master Plan Pictures

—page 2 of 2—



### otter.jpg

Children and otters frolic together at a river mouth while, to the left, waves crash along the rocky shore near the Race.



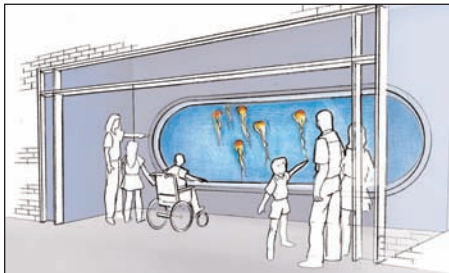
### otter-KidSliding.jpg

Children slide through a clear tube as curious otters swim past.



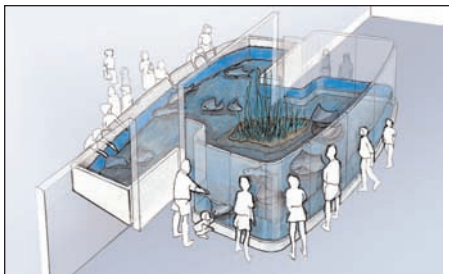
### GreatHall.jpg

A map of the Long Island Sound watershed on the floor leads people to the seal exhibit.



### GreatHall-jellies.jpg

Jellies glow from across the room as rays beckon visitors to touch them in the next gallery.



### GreatHall-RayTouch.jpg

The expanded stingray touch pool.



### Winter-WaveCrash.jpg

Beneath the crashing waves, large cod and haddock swim slowly past rocky cliff faces encrusted with barnacles and sponges, while giant halibut glide along the sandy bottom.